



## Sherborne Road, Bury St. Edmunds, Suffolk, IP33 2EP

Rent - £1,100 PCM      Deposit - £1,269

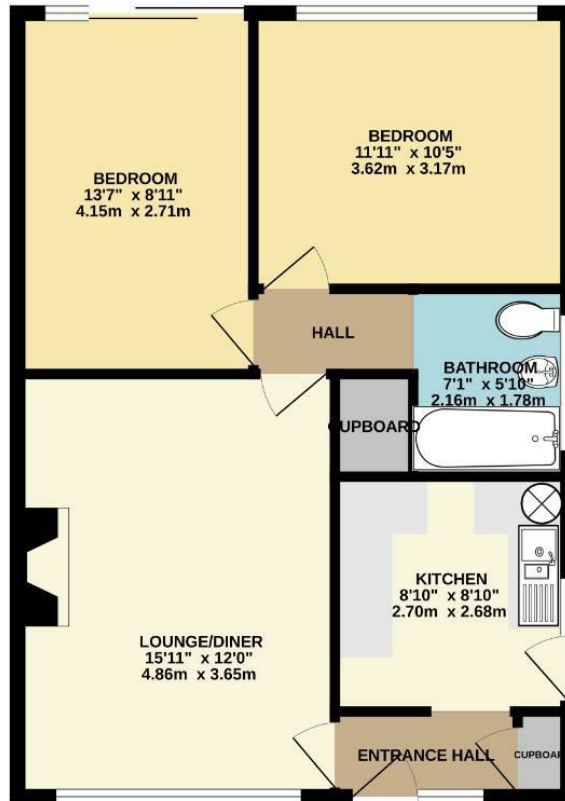
Shires Residential are delighted to offer this well presented two double bedroom semi-detached bungalow situated on the Horringer Court development. The property is comprised of entrance hallway, kitchen, lounge/diner and family bathroom, with a pleasant frontage and generous rear garden with garage and driveway.

- SEMI-DETACHED BUNGALOW
- 2 DOUBLE BEDROOMS
- FRONT AND REAR GARDEN
- FAMILY BATHROOM
- GARAGE & ONE OFF ROAD PARKING SPACE
- CLOSE TO TOWN AND WEST SUFFOLK HOSPITAL
- GAS HEATING & ENERGY RATING- E
- APPROXIMATE SIZE - 764 SQ FT
- PETS CONSIDERED / COUNCIL TAX BAND- B
- AVAILABLE MID APRIL



Council Tax Band: B - EPC Rating: E 54

GROUND FLOOR



Whilst every attempt has been made to ensure the accuracy of the floorplan contained here, measurements of doors, windows, rooms and any other items are approximate and no responsibility is taken for any error, omission or mis-statement. This plan is for illustrative purposes only and should be used as such by any prospective purchaser. The services, systems and appliances shown have not been tested and no guarantee as to their operability or efficiency can be given.  
Made with Metreplex ©2024

